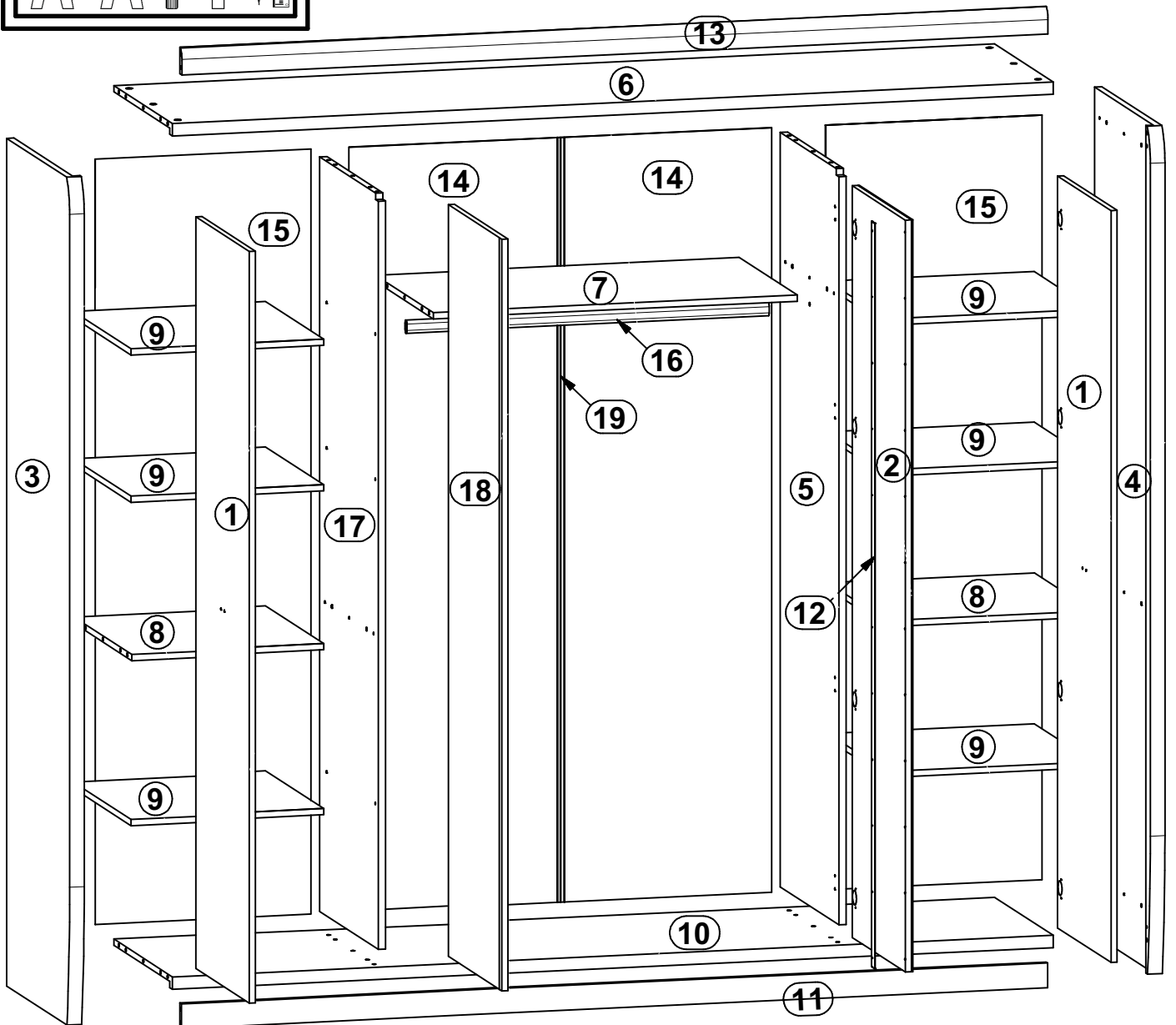
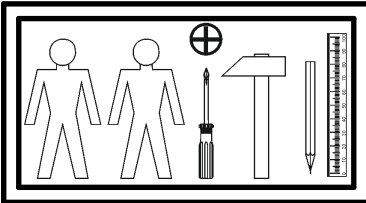
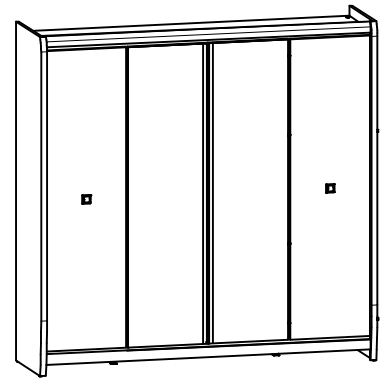


# LOREN

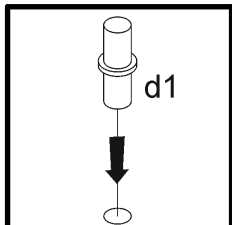
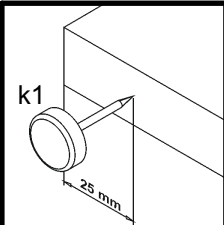
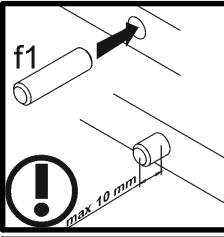
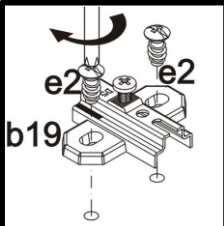
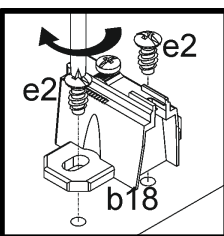
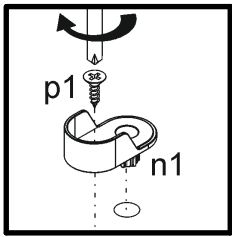
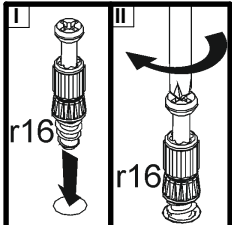
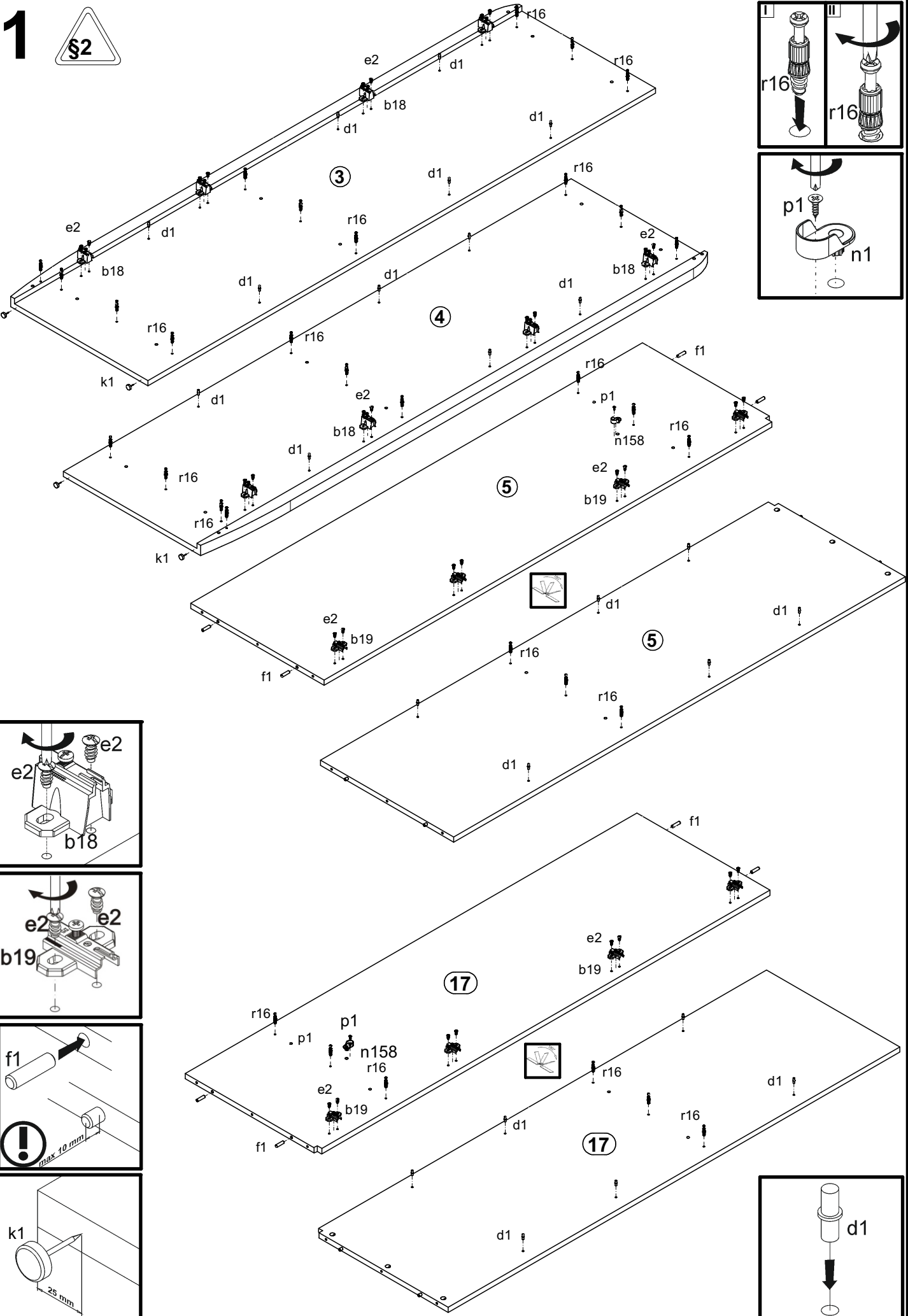
# S163-SZF4D\_22

A	B	C	D	A	B	C	D		
1	S163-0050	1960	491	4/4	9	S163-3322	509	539	3/4
2	S163-0052	1960	491	4/4	10	S163-3350	2049	539	2/4
3	S163-1163	2192	580	1/4	11	S163-4440	2013	60	2/4
4	S163-1164	2192	580	1/4	12	S163-552	1944	29	1/4
5	S163-1161	1967	539	2/4	13	S163-540	2013	64	2/4
6	S163-3351	2049	539	2/4	14	S163-9932	1991	505	1/4
7	S163-3352	993	534	3/4	15	S163-9931	1991	533	1/4
8	S163-3321	510	539	3/4	16	dr-989	989	30	1/4
					17	S163-1162	1967	539	2/4
					18	S163-0053	1960	491	4/4
					19	Lh-1961	1961	14	1/4

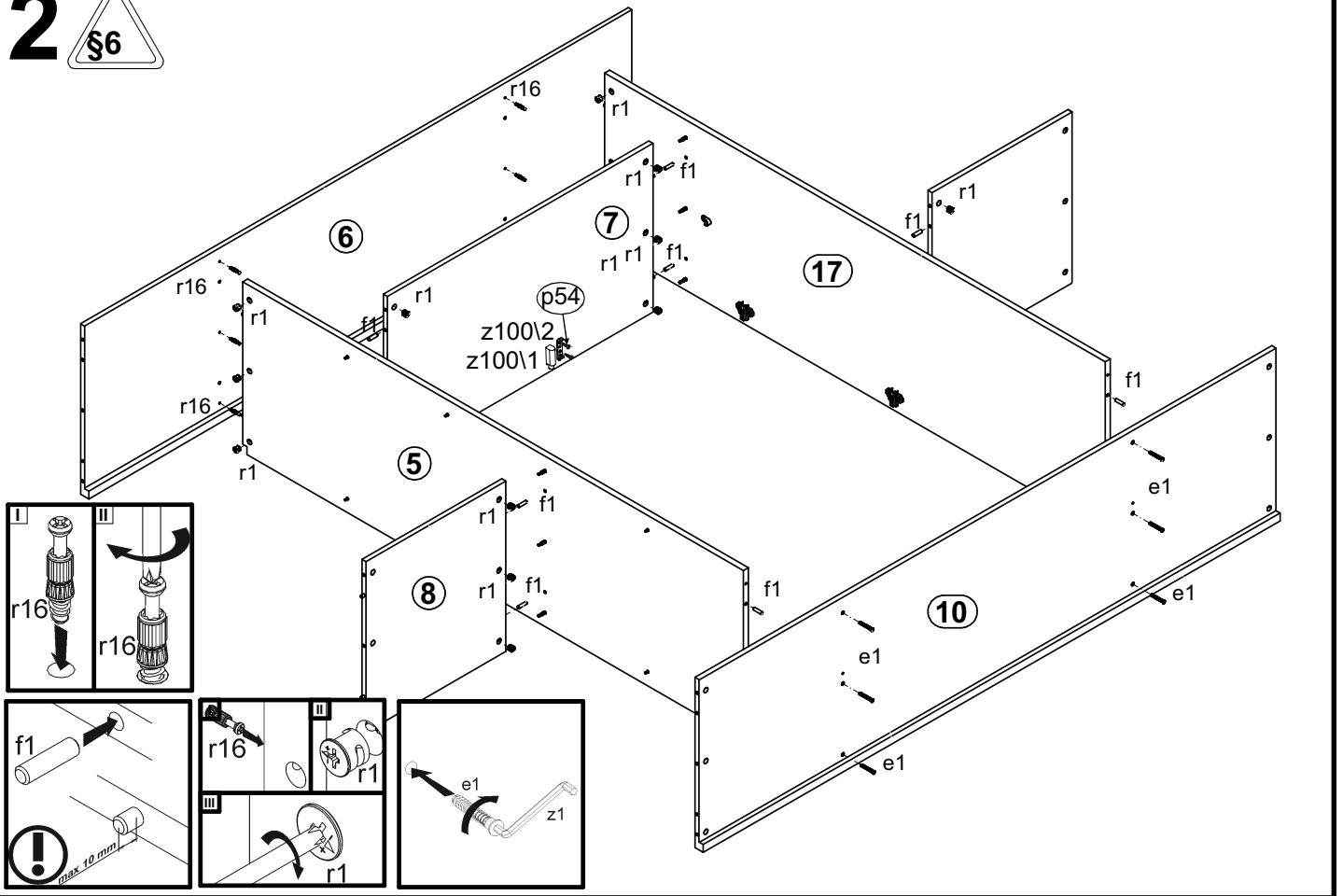


8x  a43	8x  a68	8x  b18	8x  b19	2x  c333	24x  d1 φ5x17 mm	6x  e1 φ7x50 mm	4x  j1 M4x20 mm	4x  k1
2x  k3813	2x  k3815	150x  l1	2x  n158	2x  p1 φ3,5x13 mm	12x  s2 ø16	4x  n56 32x16x151 mm	8x  p27 Ш3,5x13 mm	1x  z1
32x  p51 φ3,5x15 mm	20x  p38 φ3,5x16 mm	34x  e2 φ6,3x13 mm	34x  f1 φ8x30 mm	38x  r1 φ1,5x12mm #16	38x  r16	1x  Z100	2x  p54 φ3x12 mm	

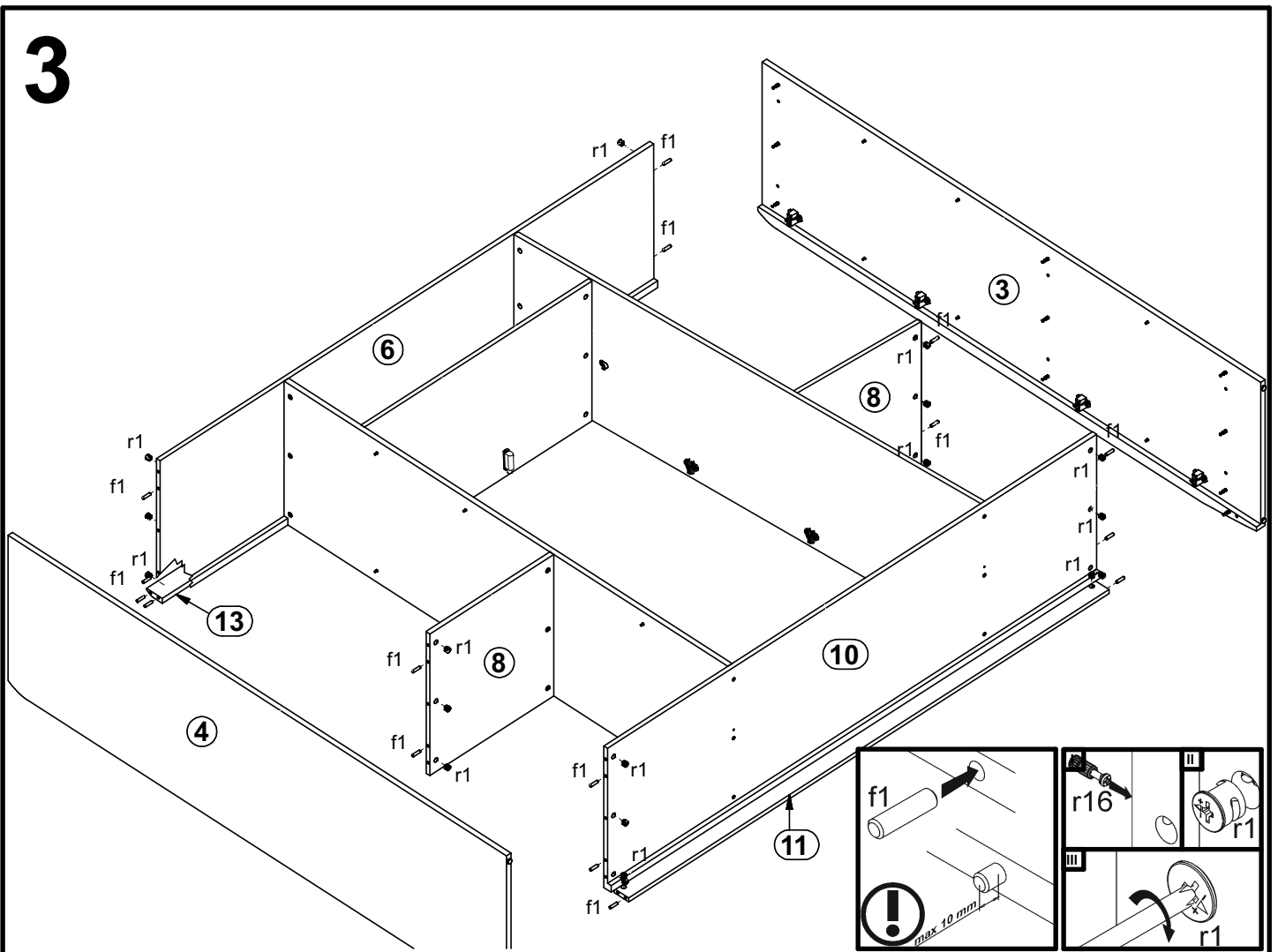
# 1

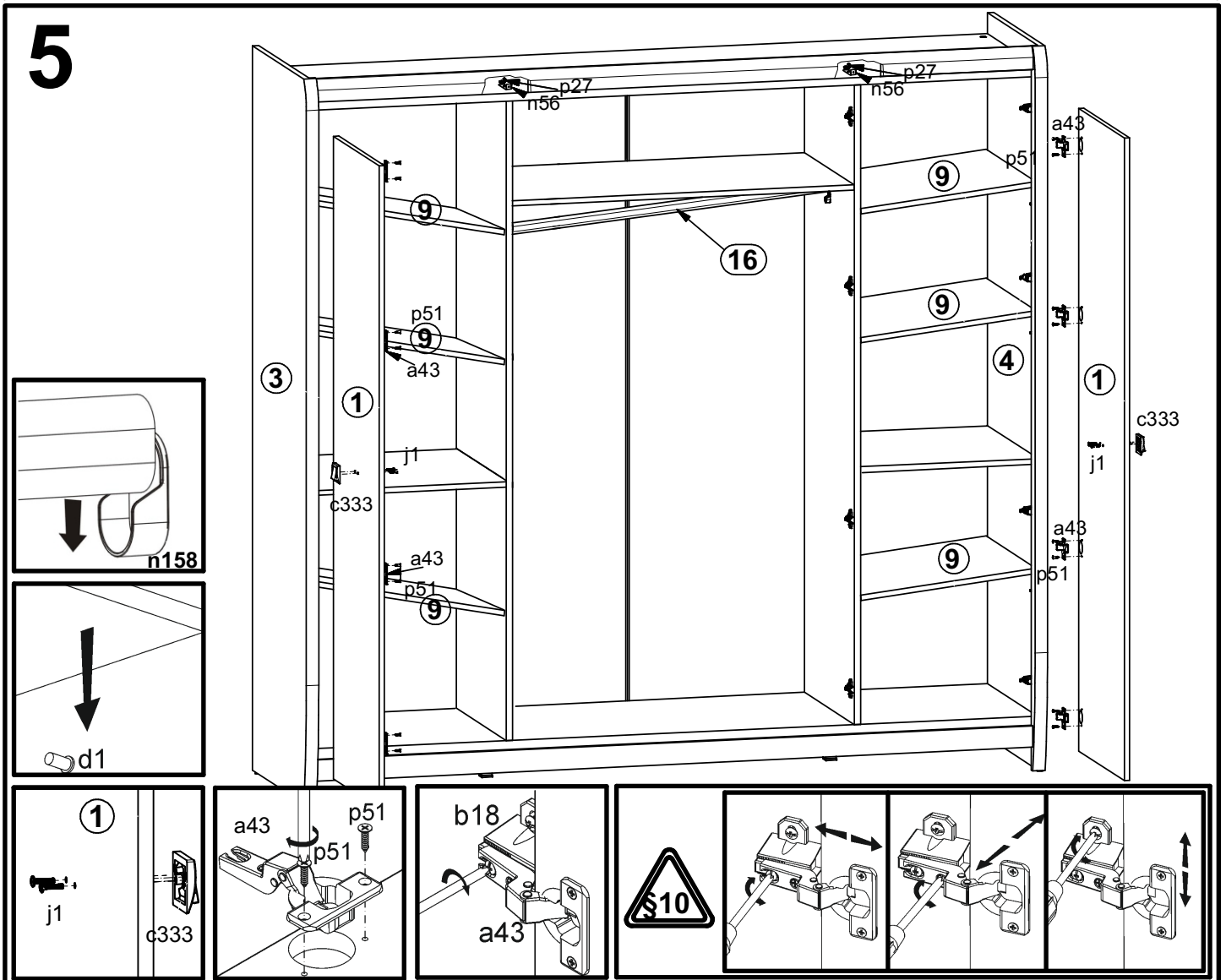
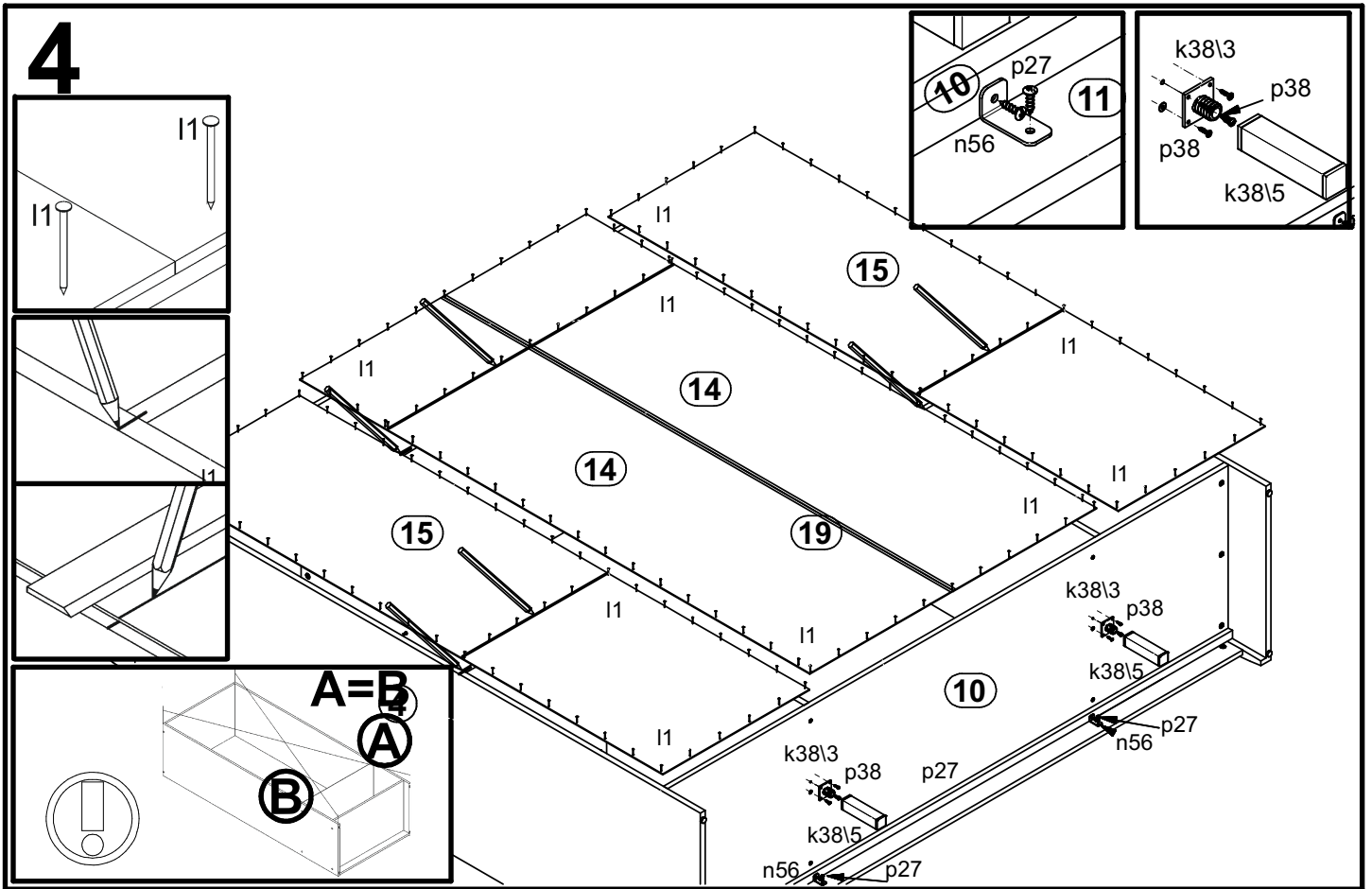


# 2



# 3





# 6

